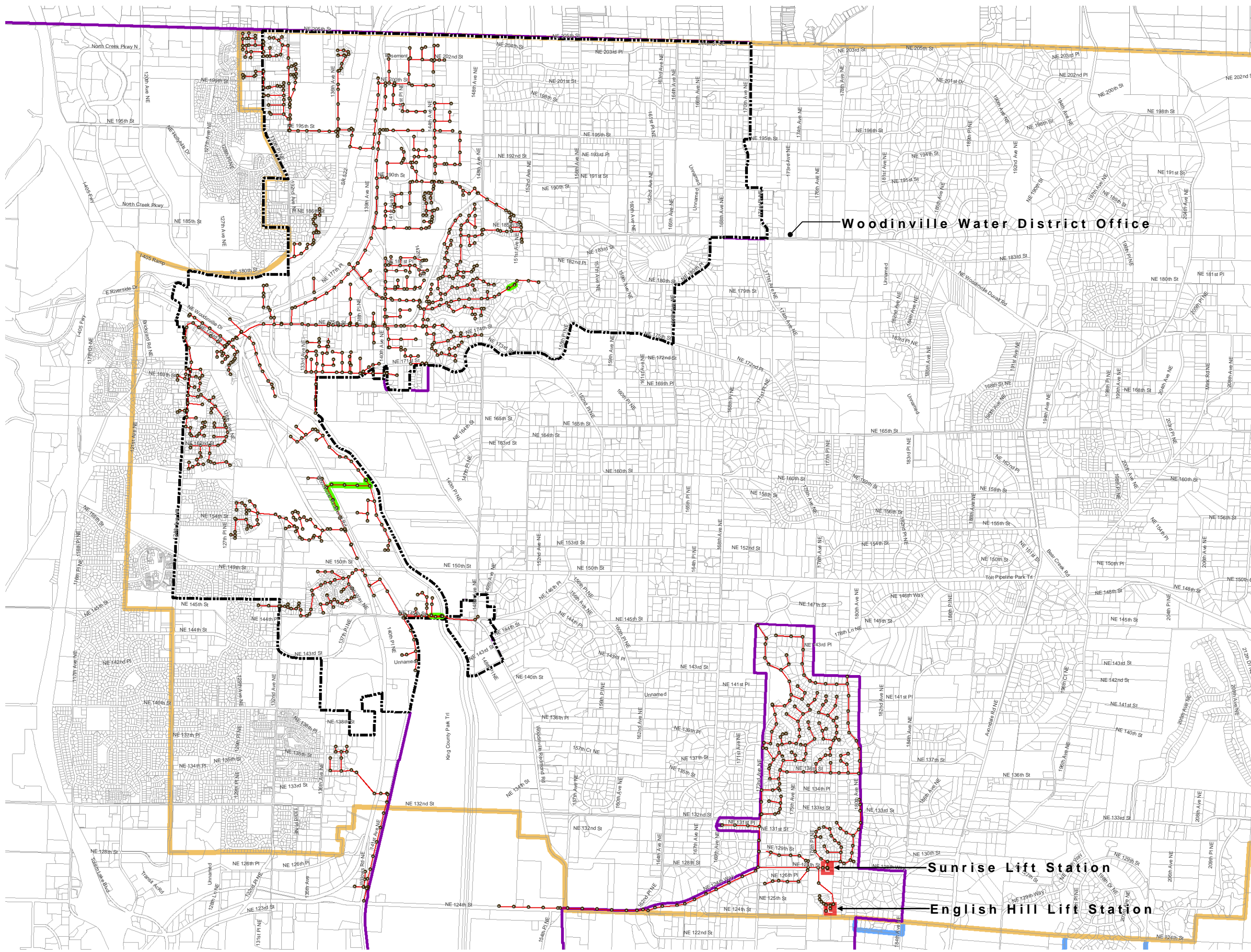




Woodinville Water District



Woodinville Water District Office

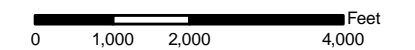
Sunrise Lift Station

English Hill Lift Station



Legend

- WWD Manholes
- █ Existing Lift Stations
- WWD Sewer Lines
- Surcharged Pipes
- Woodinville City Limits
- GMA Boundary
- WWD Boundary
- WWD Boundary-Interim Service



WWD Sewer lines and Manholes data are APPROXIMATE: Woodinville Water District 2004 and existing As-Built plans.

WWD Boundary: Woodinville Water District 2005

All other data layers obtained from King County GIS 2005, and Snohomish County GIS 2003. No warranty is made concerning the accuracy, currency, or completeness of data depicted on this map.

Map Updated: June 2006

BHC CONSULTANTS
 BHC Consultants, LLC
 720 Third Avenue, Suite 1200
 Seattle, WA 98104-1820
 P 206.505.3400
 F 206.505.3406
 Formerly a Division of Berryman & Henigar

Surcharged Pipes - Existing Conditions figure 5-15