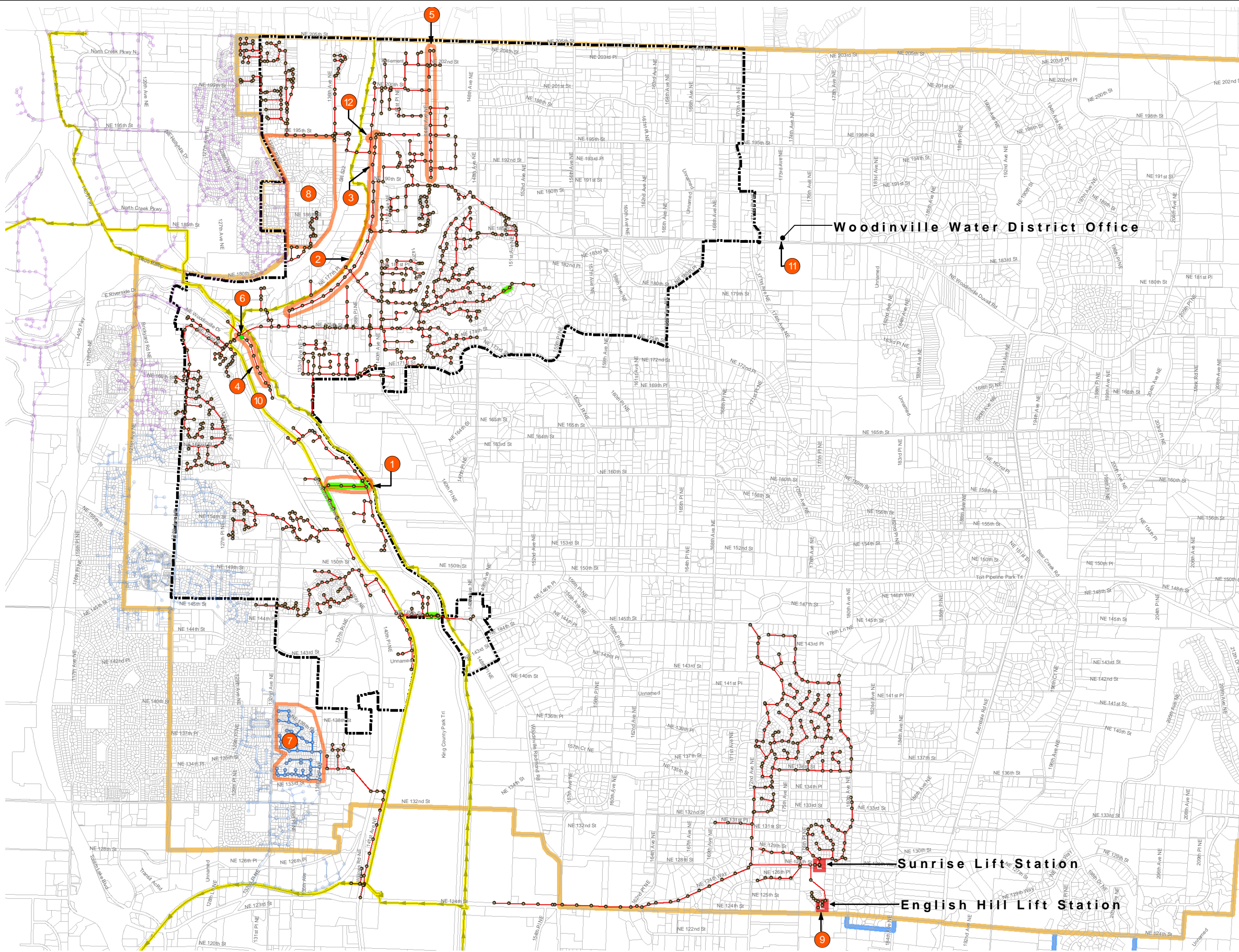


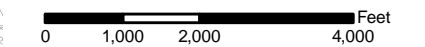


# Woodinville Water District



### Legend

- WWD Manholes
- NUD Manholes
- Bothell Manholes
- Siphon
- Ⓛ Existing Lift Stations
- WWD Sewer Lines
- NUD Sewer Lines
- Bothell Sewer Lines
- Surcharged Pipes -Existing Condition
- King County Sewer Lines
- ⬜ Woodinville City Limits
- WWD Boundary
- WWD Boundary-Interim Service
- Ⓢ CIP Priority Improvements



WWD Sewer lines and Manhole data are APPROXIMATE: Woodinville Water District 2004 and existing As-Built plans.

NUD Sewer lines & Man Holes are APPROXIMATE: Northshore Utility District Wastewater Comprehensive Plan, February 2003.

Bothell Sewer lines & Man Holes are APPROXIMATE: City of Bothell January 2004.

WWD Boundary: Woodinville Water District 2005

All other data layers obtained from King County GIS 2005, and Snohomish County GIS 2003. No warranty is made concerning the accuracy, currency, or completeness of data depicted on this map.

Map Updated: June 2006

**BHC CONSULTANTS**  
 BHC Consultants, LLC  
 720 Third Avenue, Suite 1200  
 Seattle, WA 98104-1820  
 P 206.505.3400  
 F 206.505.3406  
 Formerly a Division of Berryman & Henigar

## Capital Improvement Program