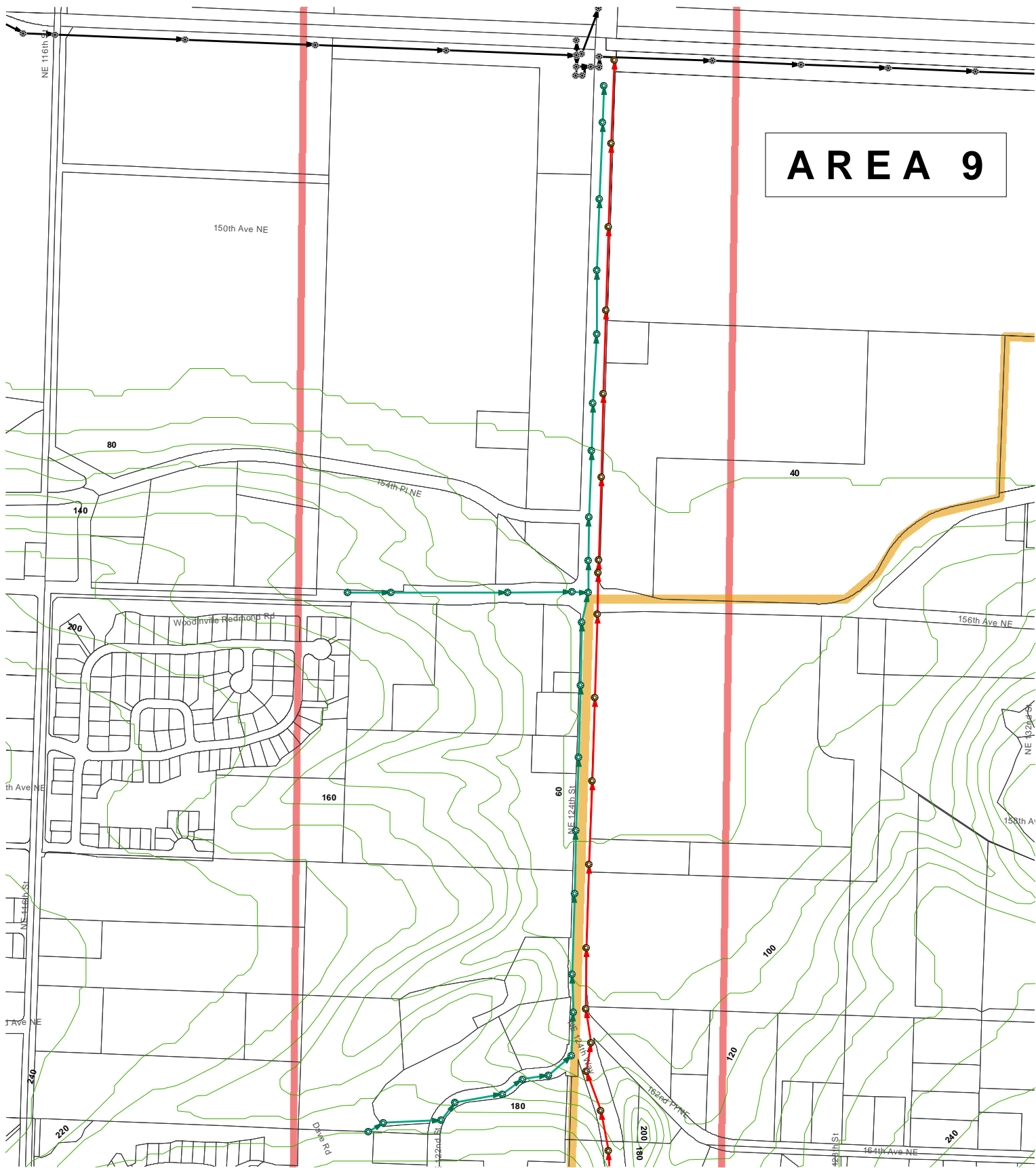


AREA 9



0 500 1,000 Feet








WWD Sewer lines and Man Holes data are APPROXIMATE:
Woodinville Water District 2004 and existing As-Built plans.

Redmond Sewer lines & Man Holes are APPROXIMATE

WWD Boundary: Woodinville Water District 2005.
All other data layers obtained from King County GIS 2005, and
Shoemoham County GIS 2003. No warranty is made concerning
the accuracy, currency, or completeness of data depicted on
this map.

Map Updated: June 2006

P:\Mapping\Maps_Generated\Woodinville Water District
projects\Drafts July 2005-10 City of Redmond.mxd

-  WWD Man Holes
-  Redmond Man Holes
-  King County Man Holes
-  WWD Sewer Lines
-  King County Sewer Lines
-  Redmond Sewer Lines
-  WWD Boundary

Woodinville
Water District



BHC CONSULTANTS
Formerly a Division of Barryman & Henigar

BHC Consultants, LLC
720 Third Avenue, Suite 1200
Seattle, WA 98104-1820
P 206.505.3400
F 206.505.3406

City of Redmond
Sewer Line At WWD
Southern Boundary