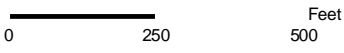
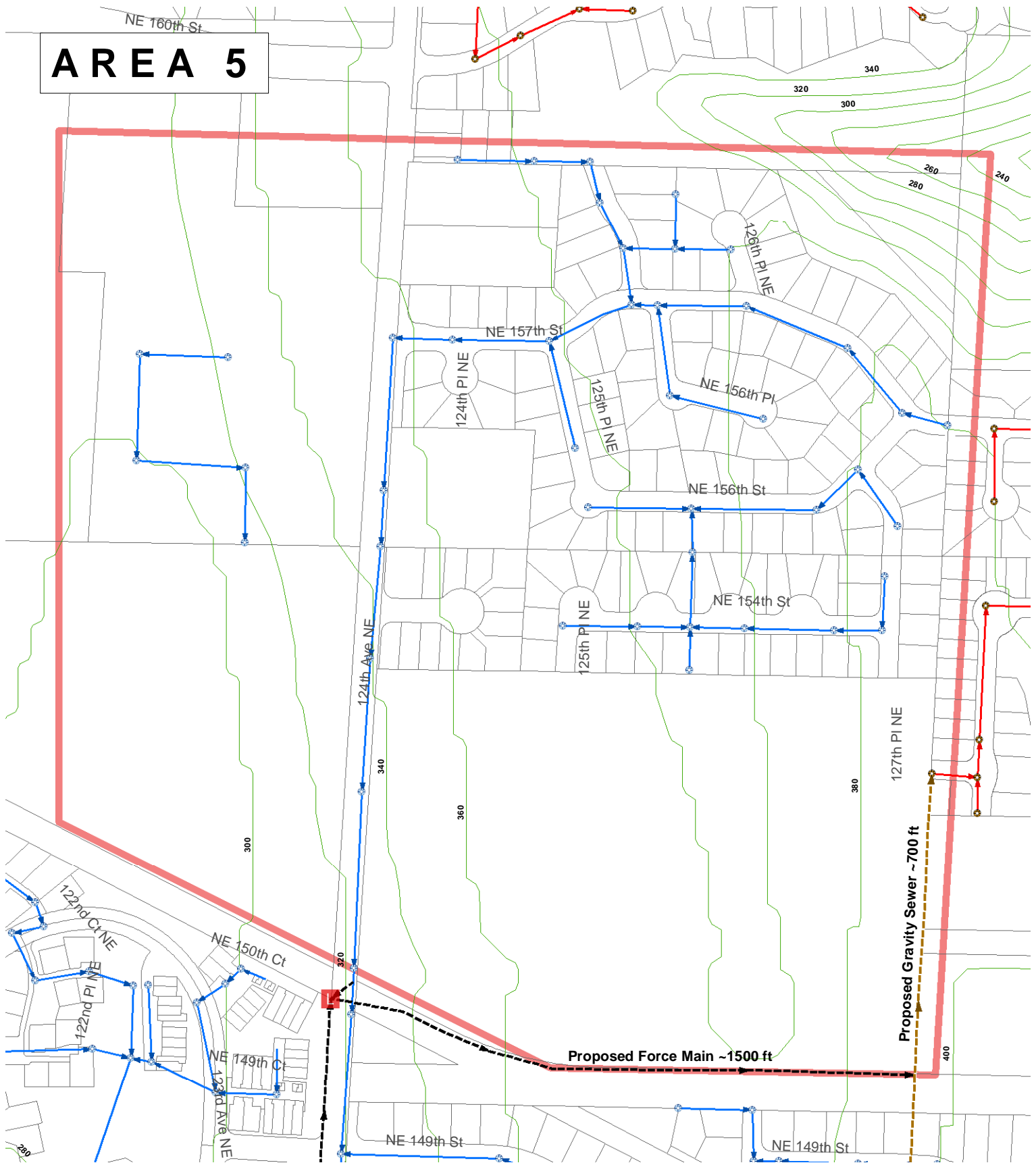


# AREA 5



WWD Sewer lines and Man Holes data are APPROXIMATE: Woodinville Water District 2004 and existing As-Built plans.







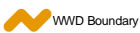
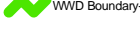
NUD Sewer lines & Man Holes are APPROXIMATE: Northshore Utility District Wastewater Comprehensive Plan, February 2003.

WWD Boundary: Woodinville Water District 2005

All other data layers obtained from King County GIS 2005, and Snohomish County GIS 2003. No warranty is made concerning the accuracy, currency, or completeness of data depicted on this map.

Map Updated: June 2006

P:\Mapping\Maps\_Generated\Woodinville Water District\projects\District July 2005\5-6 NUD Area 5.mxd

- Legend**
-  Proposed Lift Station
  -  WWD Man Holes
  -  NUD Man Holes
  -  WWD Sewer Lines
  -  NUD Sewer Lines
  -  Proposed Gravity Sewer
  -  Proposed Force Main
  -  WWD Boundary
  -  WWD Boundary-Interim Service



Woodinville Water District 

**BHC CONSULTANTS** BHC Consultants, LLC  
 720 Third Avenue, Suite 1200  
 Seattle, WA 98104-1820  
 P 206.505.3400  
 F 206.505.3406  
 Formerly a Division of Berryman & Henigar

WWD Served By  
 Northshore Utility  
 District