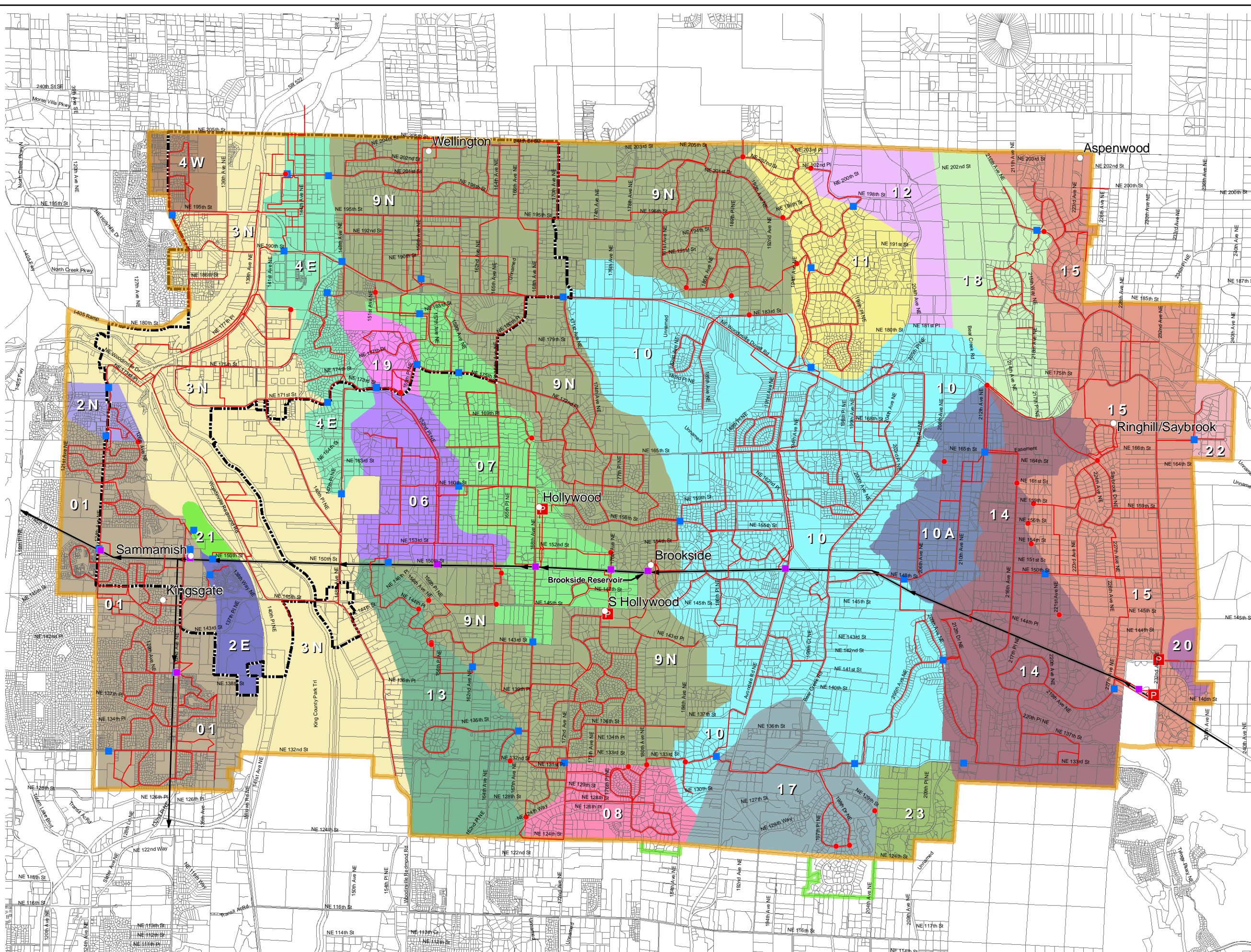


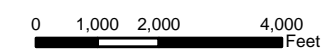


Woodinville Water District



Legend

- "Name"
- Storage Facilities
- Tolt Taps
- Zone Valves
- PRVs
- Pump Stations
- Tolt Pipe Line
- Pipe Line
- Woodinville City Limits
- WWD Boundary
- WWD Boundary-Interim Service
- Storage Facilities



WWD Boundary: Woodinville Water District 2005

All other data layers obtained from King County GIS 2005, and Snohomish County GIS 2003. No warranty is made concerning the accuracy, currency, or completeness of data depicted on this map.

Map Updated: June 2006

BHC CONSULTANTS
 BHC Consultants, LLC
 720 Third Avenue, Suite 1200
 Seattle, WA 98104-1820
 P 206.505.3400
 F 206.505.3406
 Formerly a Division of Berryman & Henigar

District Water System