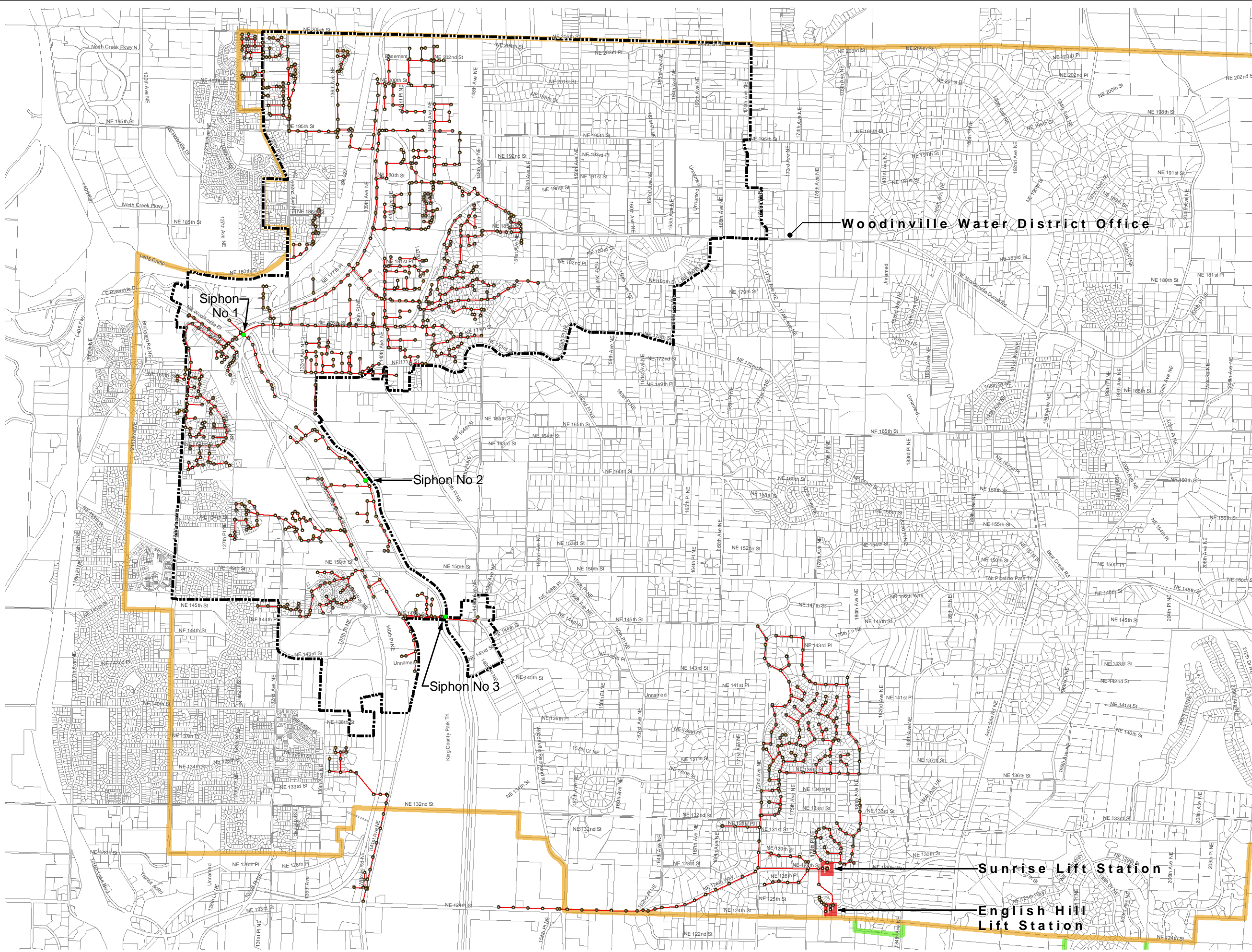


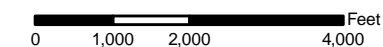


# Woodinville Water District



## Legend

- WWD Manholes
- Siphons
- Ⓟ Existing Lift Stations
- ↗ WWD Sewer Lines
- ↗ WWD Boundary
- ↗ WWD Boundary-Interim Service
- Ⓜ Woodinville City Limits



WWD Sewer lines and Manholes data are APPROXIMATE: Woodinville Water District 2004 and existing As-Built plans.

WWD Boundary: Woodinville Water District 2005

All other data layers obtained from King County GIS 2005, and Snohomish County GIS 2003. No warranty is made concerning the accuracy, currency, or completeness of data depicted on this map.

Map Updated: June 2006

**BHC CONSULTANTS**  
 BHC Consultants, LLC  
 720 Third Avenue, Suite 1200  
 Seattle, WA 98104-1820  
 P 206.505.3400  
 F 206.505.3406  
 Formerly a Division of Berryman & Henigar

## Existing Sewer System